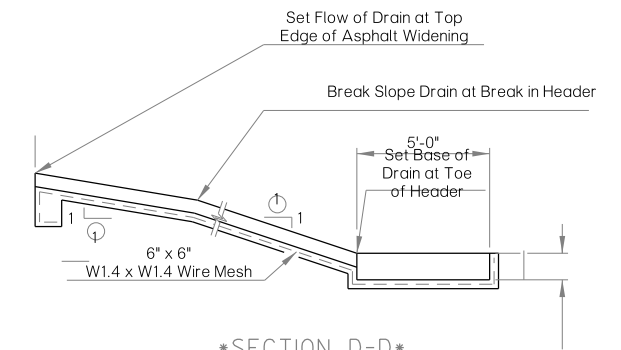
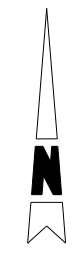
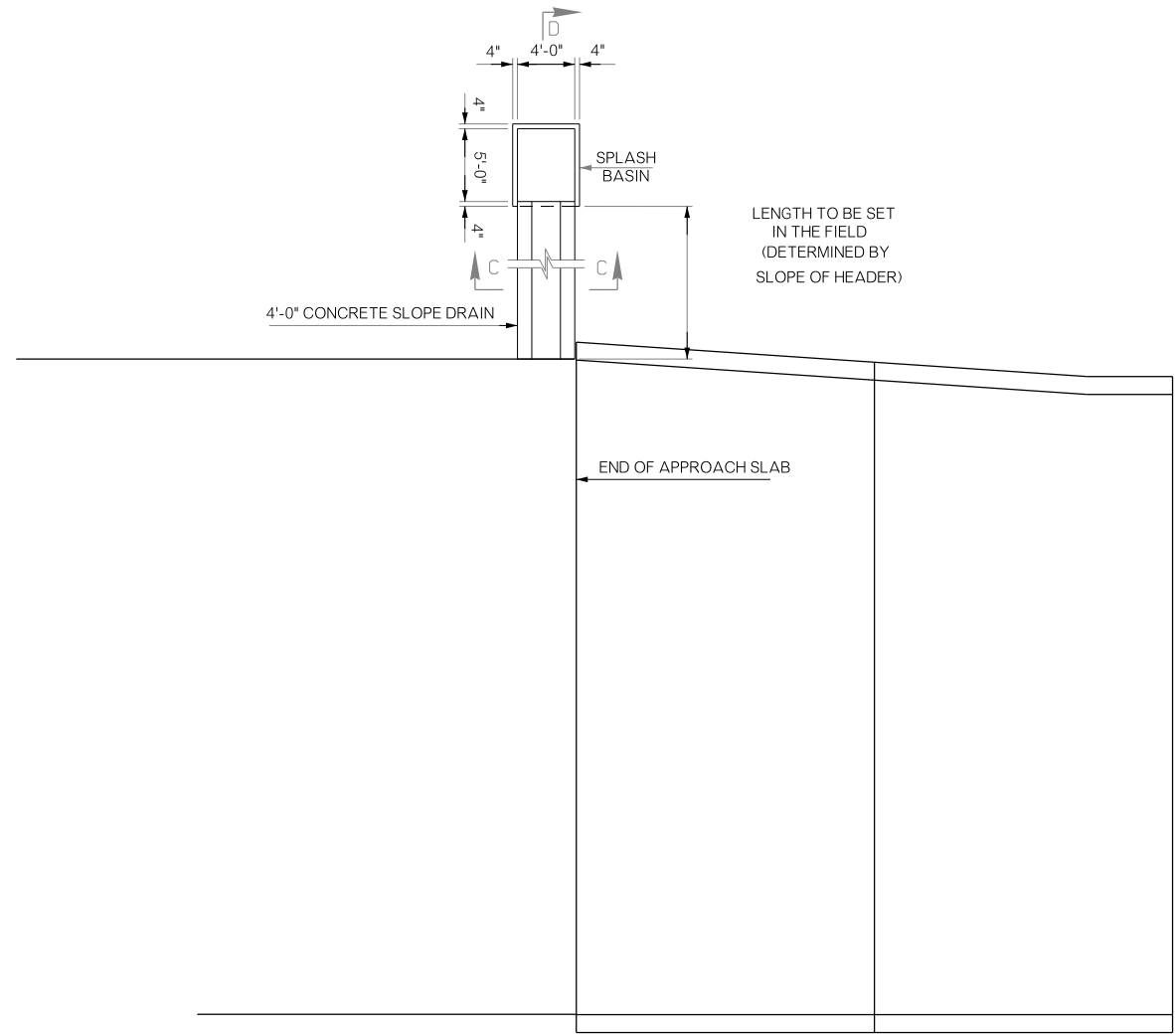
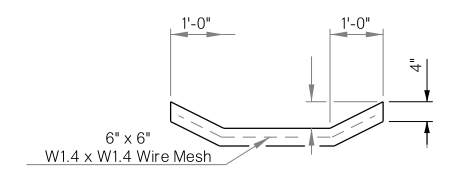


REVISIONS		
REV. NO.	DESCRIPTION	DATE



SECTION D-D
Slope to Match Slope of Header



SECTION C-C

APPROACH SLAB WITH DRAIN AT END OF BRIDGE

BRIDGE 'C' I-44 WB OVER ARK. RIVER & ELWOOD AVE.	TULSA COUNTY	Design	N/A	N/A
DRAIN AT END OF BRIDGE (BRIDGE C)		Detail	ADG	06/16
		Check	KMS	07/16
STATE OF OKLAHOMA		Squad:	MAYFIELD	
DEPARTMENT OF TRANSPORTATION		Engr:	ELYAZGI	
JOB/PIECE NO. 31944(04)	SHEET NO. B016			